

PRODUCT INFORMATION PACKET

Model No: 145TTDR16023

Catalog No: GT2009

3 HP Close-Coupled Pump Motor, 3 phase, 3600 RPM, 200 V, 145JMV Frame, ODP
JM Motors



Regal and Marathon are trademarks of Regal Beloit Corporation or one of its affiliated companies.
©2020 Regal Beloit Corporation, All Rights Reserved. MC017097E

REGAL

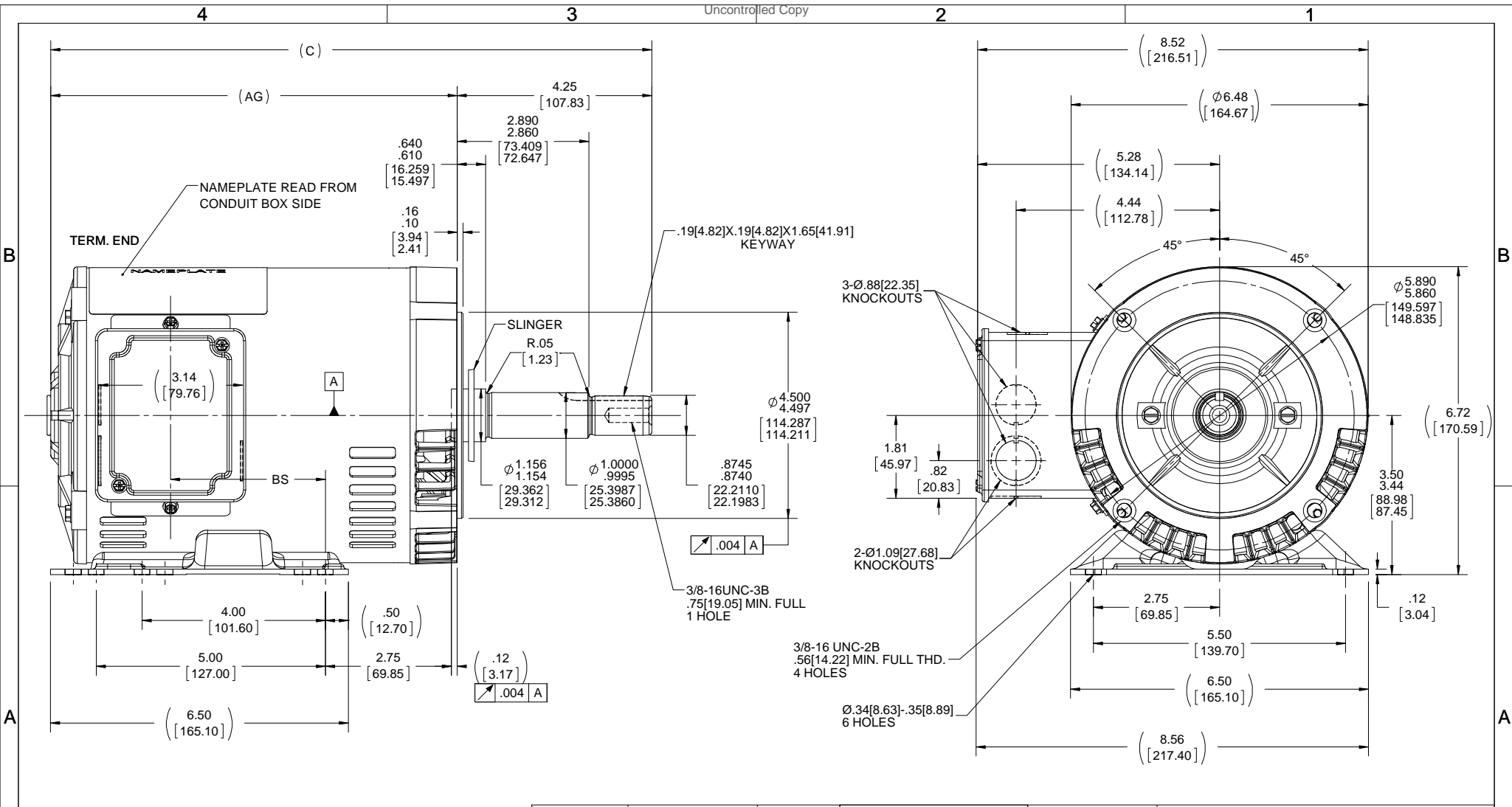
Nameplate Specifications

Output HP	3 Hp	Output KW	2.2 kW
Frequency	60 Hz	Voltage	200 V
Current	8.8 A	Speed	3510 rpm
Service Factor	1.15	Phase	3
Efficiency	87.5 %	Power Factor	83.5
Duty	Continuous	Insulation Class	F
Design Code	A	KVA Code	M
Frame	145JMV	Enclosure	Drip Proof
Thermal Protection	No	Ambient Temperature	40 °C
Drive End Bearing Size	6206	Opp Drive End Bearing Size	6203
UL	Recognized	CSA	Y
CE	Y	IP Code	22

Technical Specifications

Electrical Type	Squirrel Cage Inverter Rated	Starting Method	Line Or Inverter
Poles	2	Rotation	Reversible
Resistance Main	4.04 Ohms	Mounting	Rigid Base
Motor Orientation	Horizontal Or Shaft Down	Drive End Bearing	Ball
Opp Drive End Bearing	Ball	Frame Material	Rolled Steel
Shaft Type	JM	Overall Length	15.12 in
Frame Length	9.06 in	Shaft Diameter	0.875 in
Shaft Extension	4.25 in	Assembly/Box Mounting	F1 ONLY
Outline Drawing	A-100130-906	Connection Drawing	A-EE7300

This is an uncontrolled document once printed or downloaded and is subject to change without notice. Date Created:18/06/2020



DASH NO.	"C"	"AG"	"BS"	DRAWING REVISION F	REVISION BY A. KEETHA	DATE 01/05/2018	TOLERANCES UNLESS OTHERWISE SPECIFIED: DEC. INCH mm ANGLE .X ±0.1 [+2.5] ±7-30° .XX ±0.03 [+0.76] .XXX ±0.005 [+0.127] .XXXX ±0.0005 [+0.0127] REMOVE BURRS & BREAK SHARP EDGES: .003/.015 [.076/.381] X 45° CORNER FILLETS: R.02 [.51] MACHINED SURFACES: 200 5.1 INCH mm mm SHOWN IN [BRACKETS]	DRAWN BY SMC	Regal Beloit America, Inc. DESCRIPTION OUTLINE 140 FR. - DR. PR. 3Ø - C'FACE JM EXT.		
	706	13.11[332.99]	8.87[225.29]	3.37[85.59]	ECO-0143026	APPROVED BY PST		DATE 04/11/2018		DATE 09-30-1999	
	756	13.61[345.69]	9.37[237.99]	3.87[98.29]	ECO DESCRIPTION OUTLINE CONVERSION PROJECT COPYRIGHT REGAL BELOIT AMERICA, INC. ALL RIGHTS RESERVED. PROPRIETARY AND CONFIDENTIAL INFORMATION - THIS DOCUMENT IS THE PROPERTY OF REGAL BELOIT AMERICA, INC. ("OWNER") AND CONTAINS OWNER'S PROPRIETARY INFORMATION. ANY PERSON, CORPORATION OR OTHER FIRM RECEIVING IT IS DEEMED, BY RECEIVING IT, TO AGREE THAT IT, AND/OR ANY PART OF IT, SHALL NOT BE DISCLOSED TO ANY PERSON, CORPORATION OR OTHER ENTITY, DUPLICATED, AND/OR USED, EXCEPT AS EXPRESSLY APPROVED IN WRITING IN ADVANCE BY OWNER. THIS DOCUMENT SHALL BE RETURNED TO OWNER UPON REQUEST. IT MAY BE SUBJECT TO CERTAIN RESTRICTIONS UNDER APPLICABLE EXPORT CONTROL LAWS AND REGULATIONS.			APPROVED BY ML		DATE 01-24-1999	
	806	14.11[358.39]	9.87[250.69]	4.37[110.99]				REFERENCE 100130		MATERIAL	
	856	14.61[371.09]	10.37[263.39]	4.87[123.69]				THIRD ANGLE PROJECTION		DRAWING NUMBER 100130	PROCESS/FINISH
906	15.11[383.79]	10.87[276.09]	5.37[136.39]				SIZE B	DRAWING NUMBER 100130	SHEET 1 OF 1		

**THREE PHASE - SINGLE VOLTAGE
MOTOR - CONDUIT BOX @ 'A'**

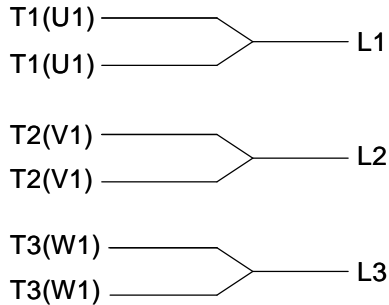
**TO REVERSE ROTATION:
INTERCHANGE ANY TWO
LINE LEAD CONNECTIONS.**

TERMINAL BLOCK WHEN SPECIFIED



VIEW OF TERMINAL END

**IF MOTOR HAS
6 LEADS**



A-9806 DECAL

**OPTIONAL CORD
CONNECTION**

- L1 WHITE
- L2 RED
- L3 BLACK

DRAWING REVISION AB	REVISION BY JJB	DATE 06-27-2017
ECO ECO-0125361	APPROVED BY TB	DATE 06-27-2017
ECO DESCRIPTION UPDATED TO CURRENT STANDARDS		
<small>COPYRIGHT REGAL BELOIT AMERICA, INC. ALL RIGHTS RESERVED. PROPRIETARY AND CONFIDENTIAL INFORMATION - THIS DOCUMENT IS THE PROPERTY OF REGAL BELOIT AMERICA, INC. ("OWNER") AND CONTAINS OWNER'S PROPRIETARY INFORMATION. ANY PERSON, CORPORATION OR OTHER FIRM RECEIVING IT IS DEEMED, BY RECEIVING IT, TO AGREE THAT IT, AND/OR ANY PART OF IT, SHALL NOT BE DISCLOSED TO ANY PERSON, CORPORATION OR OTHER ENTITY, DUPLICATED, AND/OR USED, EXCEPT AS EXPRESSLY APPROVED IN WRITING IN ADVANCE BY OWNER. THIS DOCUMENT SHALL BE RETURNED TO OWNER UPON REQUEST. IT MAY BE SUBJECT TO CERTAIN RESTRICTIONS UNDER APPLICABLE EXPORT CONTROL LAWS AND REGULATIONS.</small>		



DRAWN BY DA
DATE 03-26-1993
APPROVED BY TB
DATE 03-26-1993
REFERENCE
THIRD ANGLE PROJECTION

Regal Beloit America, Inc.	
DESCRIPTION CONNECTION DIAGRAM EXTERNAL - SINGLE VOLTAGE - 3Ø MOTOR	
MATERIAL	PROCESS/FINISH
SIZE A	DRAWING NUMBER EE7300
SHEET 1 OF 1	

Data Sheet

145TTDR16023



Submittal
Data @ 200 V

Date: 6/19/2017

Customer:
Attention:
Submitted by: FAREEDA DUDEKULA

Motor Load Data

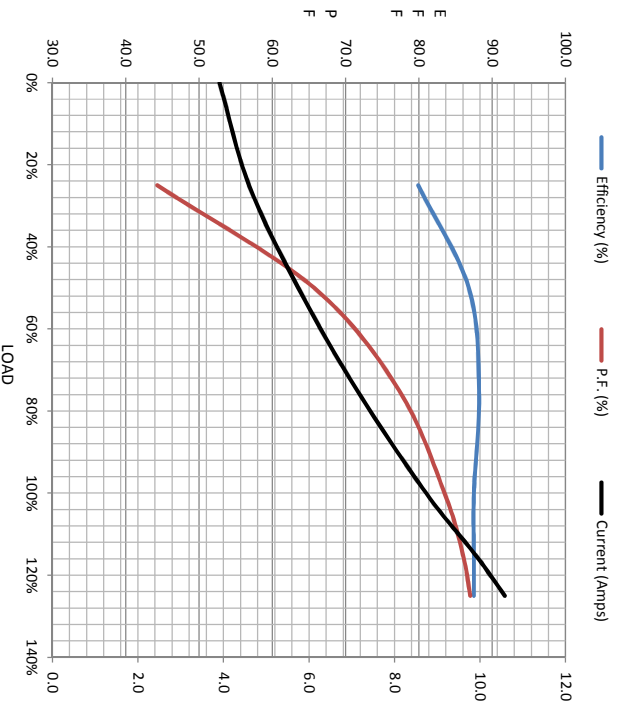
Load	0%	25%	50%	75%	100%	115%	125%	LR
Current (Amps)	3.9	4.6	5.8	7.1	8.7	9.9	10.6	94.5
Torque (ft-lb)	0.00	1.10	2.21	3.3	4.5	5.2	5.7	17.8
RPM	3600	3580	3560	3535	3510	3495	3485	0
P.F. (%)	10.9	79.9	86.8	88.2	87.5	87.5	87.5	
		44.3	65.7	77.3	83.5	86.0	87.0	65.4

Motor Speed Data

	LR	Pull-Up	BD	Rated	Idle
Speed (rpm)	0	255	2310	3510	3600
Current (Amps)	94.5	92.9	68.5	8.7	3.9
Torque (ft-lb)	17.8	15.7	23.2	4.5	0.00

Information Block

HP	3.0
Sync. RPM	3600
Frame	145
Enclosure	DP
Construction	TDR
Voltage	200 V
Frequency	60 Hz
Design	A
LR Code letter	M
Service Factor	1.15
Temp Rise @ FL	41 °C
Duty	CONT
Ambient	40 °C
Elevation	1,000 feet
Rotor/Shaft wkt	0.05 Lb-Fe
Rel Wdg	Z12175 NONE
Sound Pressure @ 1M	68 dBA
VFD Rating	CONSTANT 2:1
Outline Dwg	A-100130-906
Conn. Diag	A-EE7300
Additional Specifications:	
EQUIV CKT (OHMS / PHASE)	
R1	R2
0.7330	0.4290
X1	X2
1.0190	0.9480
Xm	Xm
	32.8150



Speed - Torque Curve

